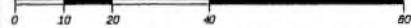


REFERENCE PLAN OF PART OF LOT A DISTRICT LOT 128 OSOYOOS DIVISION YALE DISTRICT PLAN KAP89861

PLAN EPP142229

PURSUANT TO SECTION 107 OF THE LAND TITLE ACT
FOR ROAD DEDICATION PURPOSES

BCGS B2E.083



The intended plot size of this plan is 560mm in width by 430mm in height (A size) when plotted at a scale of 1:750
(All distances are in metres)

LEGEND

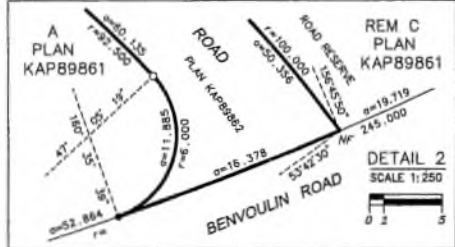
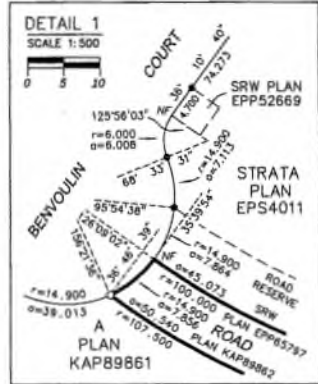
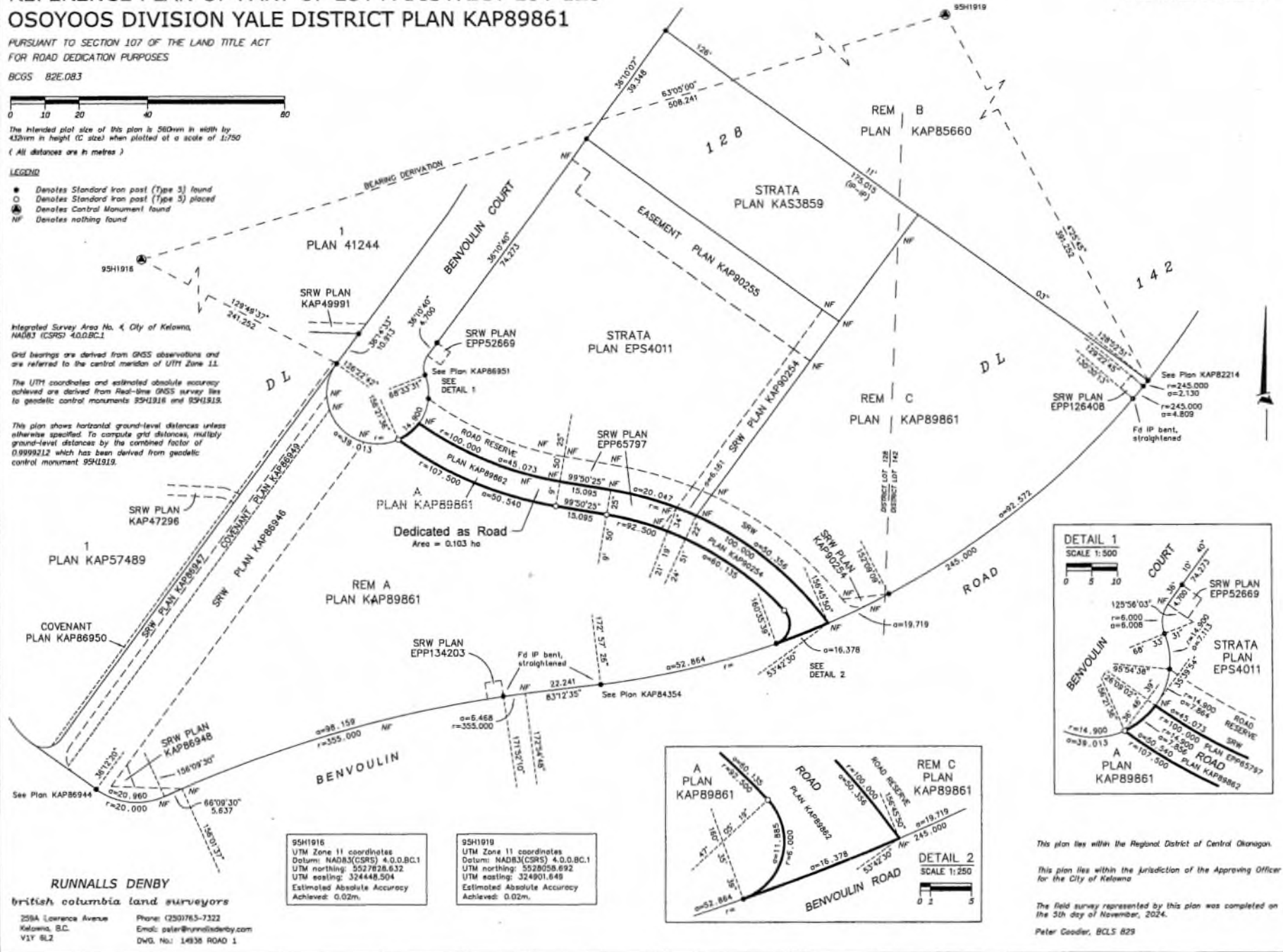
- Denotes Standard Iron post (Type 3) found
- Denotes Standard Iron post (Type 5) placed
- ⊕ Denotes Central Monument found
- NF Denotes nothing found

Integrated Survey Area No. 4, City of Kelowna,
NAD83 (CSRS) 4.0.0.BC.1

Grid bearings are derived from GNSS observations and are referred to the central meridian of UTM Zone 11.

The UTM coordinates and estimated absolute accuracy achieved are derived from Real-time GNSS survey ties to geodetic control monuments 95H1916 and 95H1919.

This plan shows horizontal ground-level distances unless otherwise specified. To compute grid distances, multiply ground-level distances by the combined factor of 0.9999212 which has been derived from geodetic control monument 95H1919.



This plan lies within the Regional District of Central Okanagan.
This plan lies within the jurisdiction of the Approving Officer for the City of Kelowna.
The field survey represented by this plan was completed on the 3th day of November, 2024.
Peter Goodler, BCLS 829

RUNNALLS DENBY
British Columbia Land Surveyors
258A Lawrence Avenue Kelowna, B.C. V1Y 8L2
Phone: (250)765-7322
Email: peter@runnallsdenby.com
DNO. No: 14938 ROAD 1

<p>95H1916 UTM Zone 11 coordinates Datum: NAD83(CSRS) 4.0.0.BC.1 UTM northing: 5527628.632 UTM easting: 324448.504 Estimated Absolute Accuracy Achieved: 0.02m.</p>	<p>95H1919 UTM Zone 11 coordinates Datum: NAD83(CSRS) 4.0.0.BC.1 UTM northing: 5528058.692 UTM easting: 324901.649 Estimated Absolute Accuracy Achieved: 0.02m.</p>
---	---